

STANDARD GROUND TAXI PROCEDURES

- General
  - Departing IFR flights shall contact JEJU DELIVERY(121.925 MHz) to obtain ATC clearance at least 10 minutes prior to ETD and shall obtain push-back clearance and taxi instruction from JEJU GROUND(121.65 MHz).
  - TWY E3 not available for aircraft with a wingspan of 118 ft (36 m) or longer.
- Radio frequency transfer point  
Aircraft shall contact 118.2 MHz(JEJU TOWER) at the following point unless otherwise instructed by ATC.

Runway in use	Radio frequency transfer point
RWY 07	Passing TWY G4
RWY 25	Runway 13/31 holding position of TWY P, E1, E2, E3
RWY 31	

Restriction of RWY 31

Aircraft operation for RWY 31 is restricted if the value of the surface friction measurements of RWY 31 is less than 0.25(Poor).

HS 1

Aircraft taxiing from the ramp to RWY 07/25 do not cross the hold marking for RWY 13/31 without ATC authorization.

HS 2

Aircraft taxiing on TWY P do not cross the hold marking for RWY 13/31 without ATC authorization.

HS 3

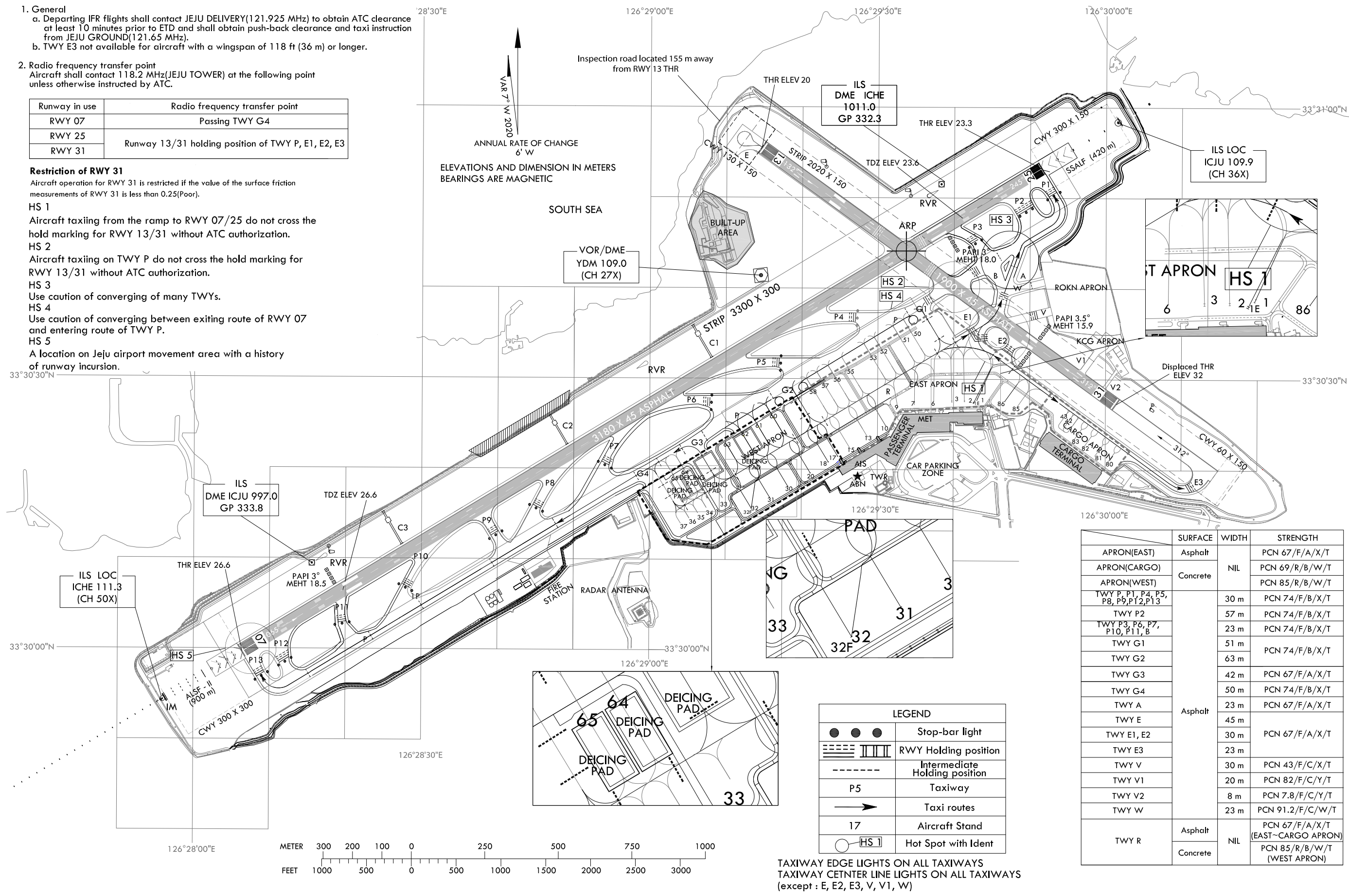
Use caution of converging of many TWYs.

HS 4

Use caution of converging between exiting route of RWY 07 and entering route of TWY P.

HS 5

A location on Jeju airport movement area with a history of runway incursion.



	SURFACE	WIDTH	STRENGTH
APRON(EAST)	Asphalt		PCN 67/F/A/X/T
APRON(CARGO)	Concrete	NIL	PCN 69/R/B/W/T
APRON(WEST)			PCN 85/R/B/W/T
TWY P, P1, P4, P5, P8, P9, P12, P13	Asphalt	30 m	PCN 74/F/B/X/T
TWY P2		57 m	PCN 74/F/B/X/T
TWY P3, P6, P7, P10, P11, B		23 m	PCN 74/F/B/X/T
TWY G1		51 m	PCN 74/F/B/X/T
TWY G2		63 m	PCN 74/F/B/X/T
TWY G3		42 m	PCN 67/F/A/X/T
TWY G4		50 m	PCN 74/F/B/X/T
TWY A		23 m	PCN 67/F/A/X/T
TWY E		45 m	PCN 67/F/A/X/T
TWY E1, E2		30 m	PCN 67/F/A/X/T
TWY E3		23 m	PCN 67/F/A/X/T
TWY V		30 m	PCN 43/F/C/X/T
TWY V1		20 m	PCN 82/F/C/Y/T
TWY V2	8 m	PCN 7.8/F/C/Y/T	
TWY W	23 m	PCN 91.2/F/C/W/T	
TWY R	Asphalt		PCN 67/F/A/X/T (EAST-CARGO APRON)
	Concrete	NIL	PCN 85/R/B/W/T (WEST APRON)

TAXIWAY EDGE LIGHTS ON ALL TAXIWAYS  
TAXIWAY CENTER LINE LIGHTS ON ALL TAXIWAYS  
(except : E, E2, E3, V, V1, W)

Change : Establishment of apron TWY R, intermediate holding position markings and strength(PCN) for TWY R.

STANDARD GROUND TAXI PROCEDURES

1. General

- a. General aviation aircraft will be guided by the FOLLOW ME vehicle or marshallers to the parking area for small aircraft.
- b. TWY E3 not available for aircraft with a wingspan of 118 ft (36 m) or longer.
- c. FOLLOW ME service is available to arriving ACFT. Pilot should make the request to JEJU GROUND.

2. Radio frequency transfer procedure

Aircraft shall contact JEJU TOWER(118.2 MHz) to JEJU GROUND (121.65 MHz) when vacating Runway.

Restriction of RWY 31

Aircraft operation for RWY 31 is restricted if the value of the surface friction measurements of RWY 31 is less than 0.25(Poor).

HS 1

Aircraft taxiing from the ramp to RWY 07/25 do not cross the hold marking for RWY 13/31 without ATC authorization.

HS 2

Aircraft taxiing on TWY P do not cross the hold marking for RWY 13/31 without ATC authorization.

HS 3

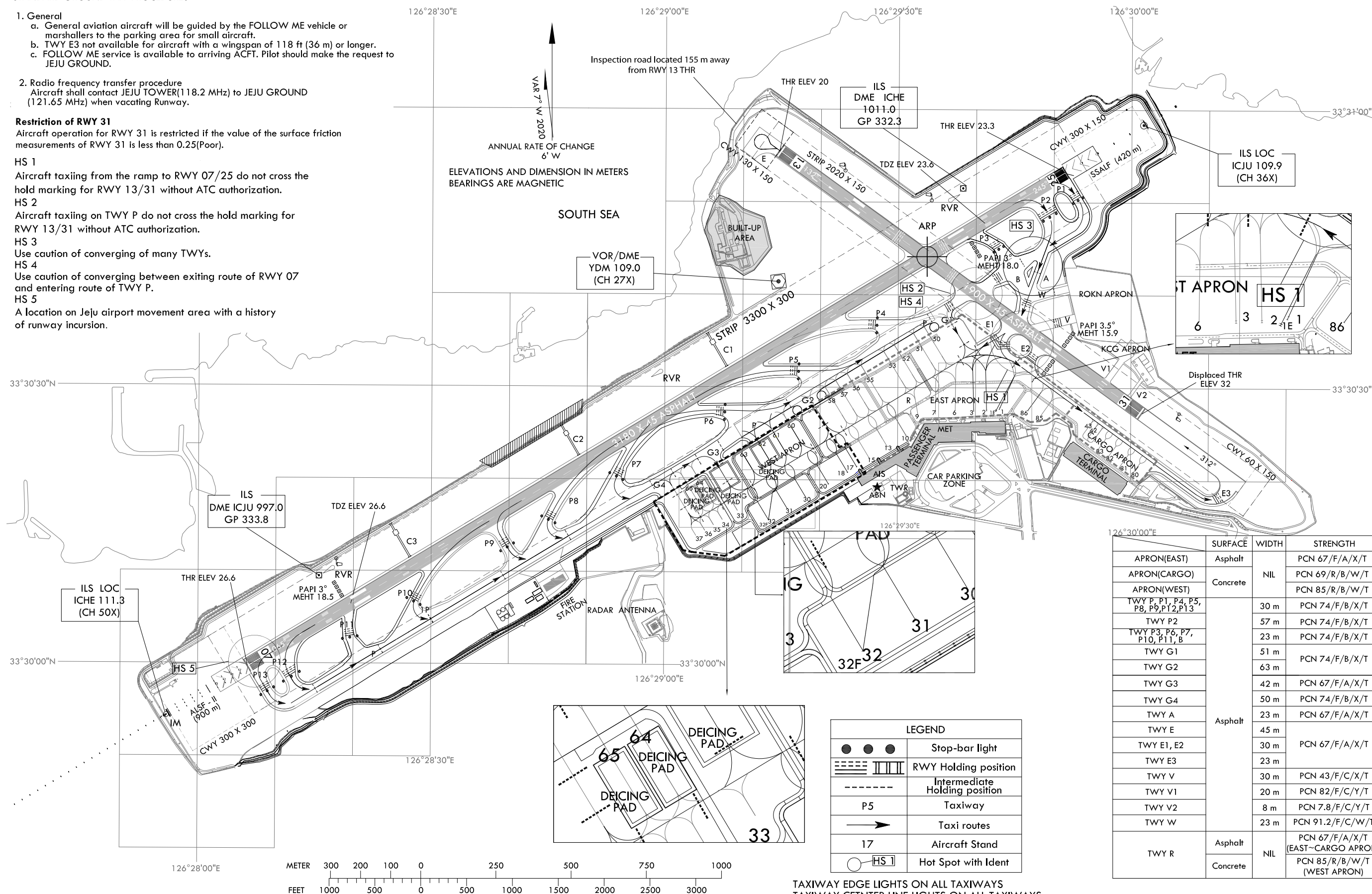
Use caution of converging of many TWYs.

HS 4

Use caution of converging between exiting route of RWY 07 and entering route of TWY P.

HS 5

A location on Jeju airport movement area with a history of runway incursion.



	SURFACE	WIDTH	STRENGTH
APRON(EAST)	Asphalt		PCN 67/F/A/X/T
APRON(CARGO)	Concrete	NIL	PCN 69/R/B/W/T
APRON(WEST)	Concrete		PCN 85/R/B/W/T
TWY P, P1, P4, P5, P8, P9, P12, P13	Asphalt	30 m	PCN 74/F/B/X/T
TWY P2		57 m	PCN 74/F/B/X/T
TWY P3, P6, P7, P10, P11, B		23 m	PCN 74/F/B/X/T
TWY G1		51 m	PCN 74/F/B/X/T
TWY G2		63 m	PCN 74/F/B/X/T
TWY G3		42 m	PCN 67/F/A/X/T
TWY G4		50 m	PCN 74/F/B/X/T
TWY A		23 m	PCN 67/F/A/X/T
TWY E		45 m	PCN 67/F/A/X/T
TWY E1, E2		30 m	PCN 67/F/A/X/T
TWY E3	23 m	PCN 67/F/A/X/T	
TWY V	30 m	PCN 43/F/C/X/T	
TWY V1	20 m	PCN 82/F/C/Y/T	
TWY V2	8 m	PCN 7.8/F/C/Y/T	
TWY W	23 m	PCN 91.2/F/C/W/T	
TWY R	Asphalt	NIL	PCN 67/F/A/X/T (EAST-CARGO APRON)
	Concrete		PCN 85/R/B/W/T (WEST APRON)

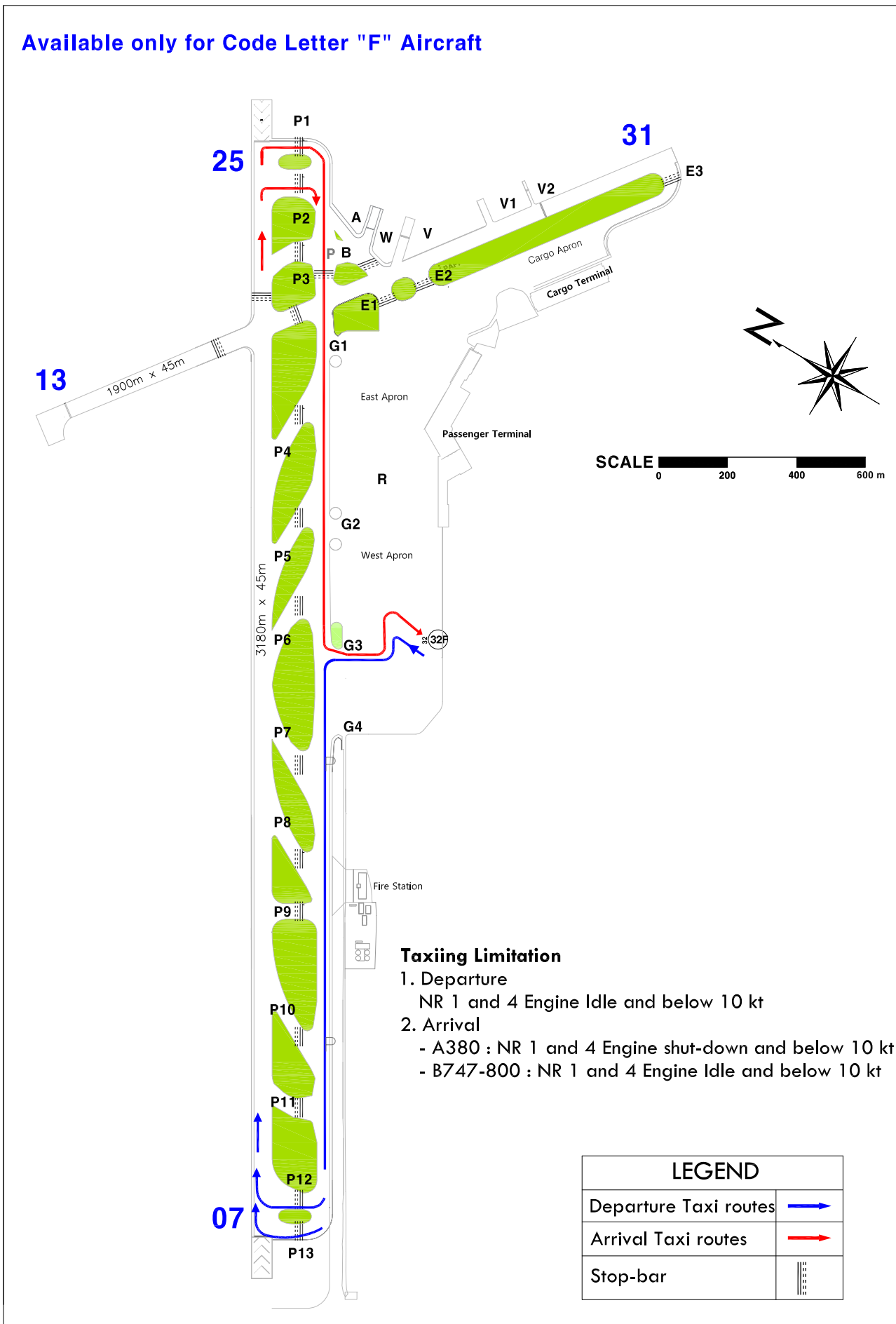
TAXIWAY EDGE LIGHTS ON ALL TAXIWAYS  
TAXIWAY CENTER LINE LIGHTS ON ALL TAXIWAYS  
(except : E, E2, E3, V, V1, W)

Change : Establishment of apron TWY R, intermediate holding position markings and strength(PCN) for TWY R.

JEJU TWR 118.2  
JEJU GND 121.65

"F" aircraft Available taxi route - RWY 07 IN USE

Available only for Code Letter "F" Aircraft



**Taxiing Limitation**

1. Departure
  - NR 1 and 4 Engine Idle and below 10 kt
2. Arrival
  - A380 : NR 1 and 4 Engine shut-down and below 10 kt
  - B747-800 : NR 1 and 4 Engine Idle and below 10 kt

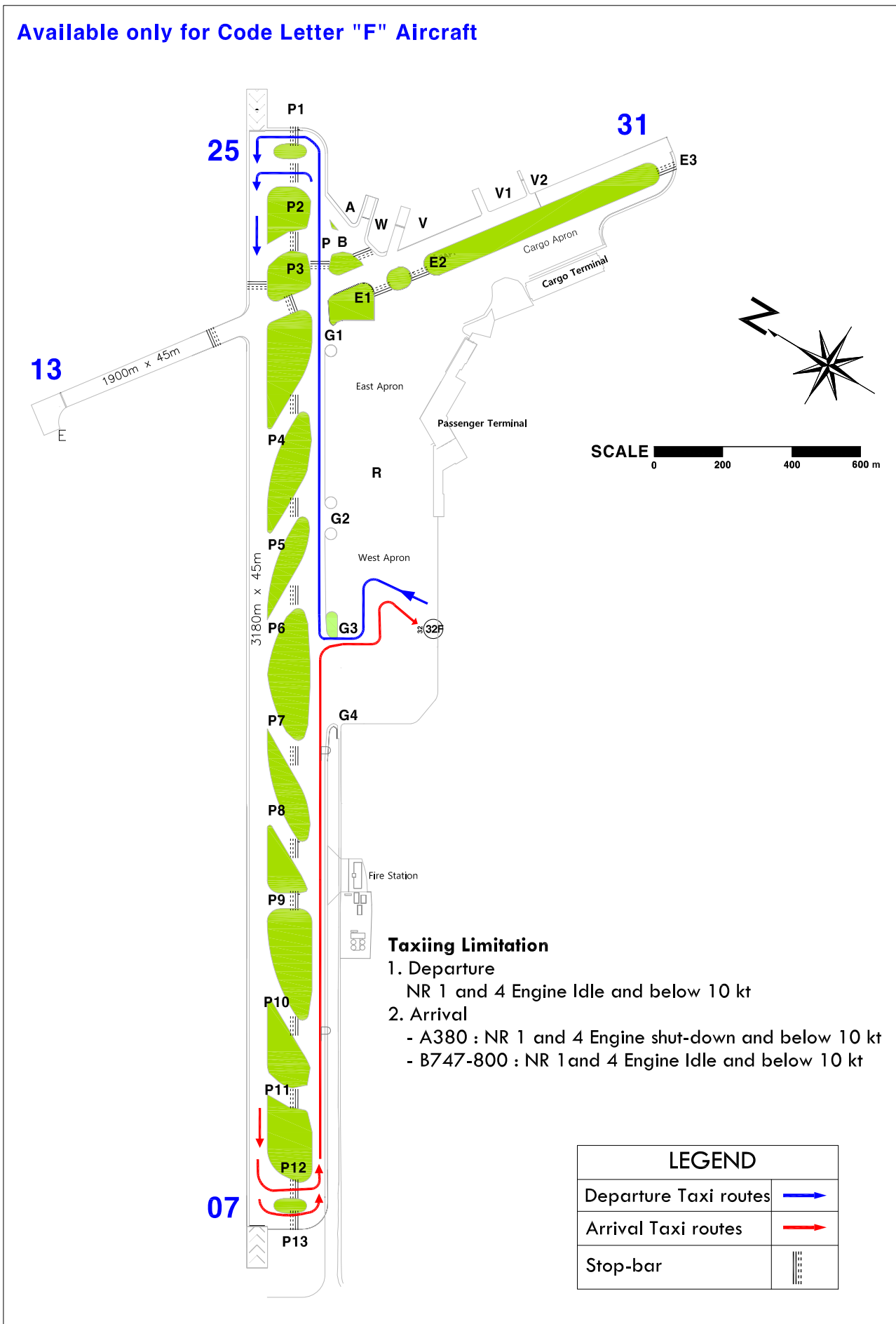
LEGEND	
Departure Taxi routes	
Arrival Taxi routes	
Stop-bar	

Change : Establishment of apron TWY R.

JEJU TWR 118.2  
JEJU GND 121.65

"F" aircraft Available taxi route - RWY 25 IN USE

Available only for Code Letter "F" Aircraft



Change : Establishment of apron TWY R.